

Hotline

**400-820-8259**  
**800-820-8259**

Website

**www.cnlanbaosensor.com**  
**www.lanbaosensor.com**

**Shanghai Lanbao Sensing Technology Co., Ltd.**

Add: No.228 Jinbi Road, Jinhui Industrial Park,  
Fengxian Area, Shanghai, China 201404  
Tel: 86-21-57486188  
Fax: 86-21-57486199  
E-mail: market@shlanbao.cn



Lanbao reserves the right to make changes

## Intelligent code reader



 **LANBAO**

Sensing the dream



## ABOUT US

LANBAO was established in 1998. We are a premier supplier of industrial discrete sensors and advanced solutions in China. Our customer base spans 120+ countries across the world.

We offer over 12,000 specifications of sensors, including intelligent proximity sensors, 3D laser measurement products, industrial vision products, and industrial safety products.

Our products are certified to meet ISO 9001, ISO 45001, ISO 14001, UKCA, RoHS, UL, OHSAS, and CE standards. We are devoted to making industrial manufacturing more efficient, cleaner, and safer industrial manufacturing.



**1998**  
Established



**360+**  
Patents and copyrights



**99000m<sup>2</sup>**  
Factory



**100+**  
Countries



**10000+**  
Products



**15,000,000**  
Pcs/year



**Ultra-high precision,  
suitable for various working conditions**

Intelligent code reader

Abundant product series

Capable of meeting a wide range of scenarios and needs

**Intelligent code readers  
are increasingly being used in**

- Automobile
- 3C electronics
- New energy lithium battery
- Industrial applications



# Our Advantages

## Intelligent code reader

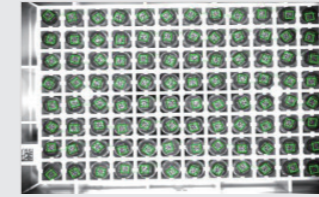
- Easy to use
- Faster code reading
- Industry optimization
- Seamless data integration



## Utilizing deep learning algorithms for faster and stronger reading

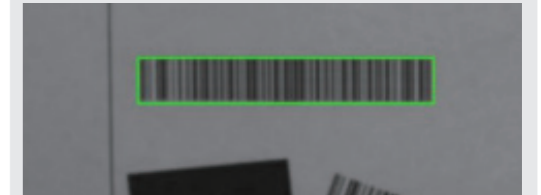
### Wide field of view for multiple barcodes

Positioning speed is increased by 3-4 times



### Low resolution and blurry codes

Super-resolution decoding

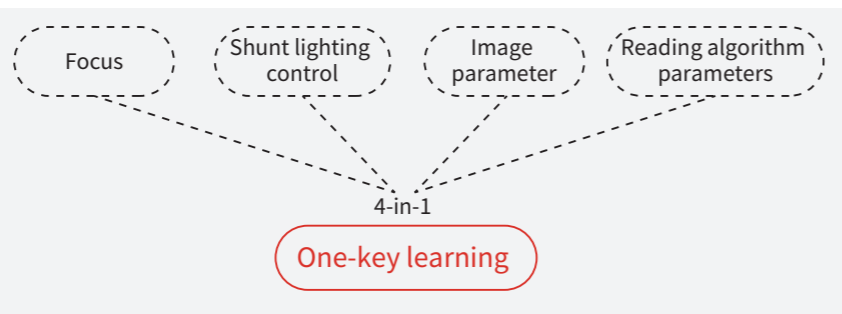
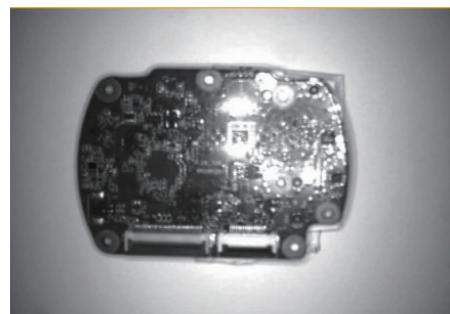


### Soiled codes

Strong restoration capability

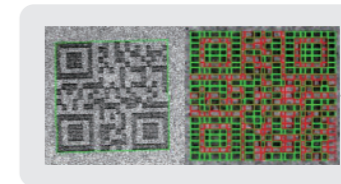


## Easy to use



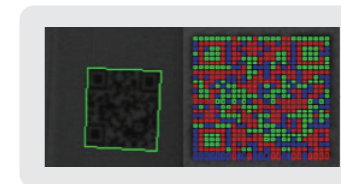
## Industry optimization

### Low contrast or bright spots



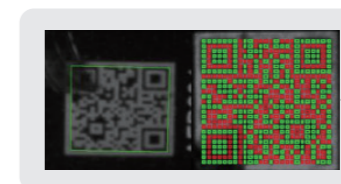
Leakage

### Insulation film obstruction Quiet zone or partial code missing



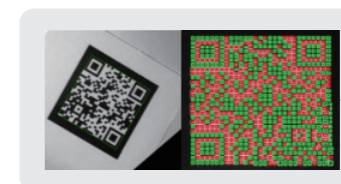
Obstruction

### Quiet zone or partial code missing



Dirt

### Irregularities or bright spots



Light reflection

## Seamless data integration



## Main parameters

| Part number      | PID-B3010G  | PID-B3023G  | PID-B3050G | PID-B3080R |
|------------------|---|-------------|------------|------------|
| Pixels           | 1 million   | 2.3 million | 5 million  | 8 million  |
| Resolution       | 1280*800  | 1920*1200   | 2448*2048  | 3840*2144  |
| Frame rate       | 60fps   | 40fps       | 30fps      | 15fps      |
| Lens focal       | 6/12/16/25 mm optional  |             |            |            |
| Light source     | red/white/blue light optional   |             |            |            |
| Focus adjustment | Auto-focus  |             |            |            |
| Bar code         | Code39, Code128, EAN8, EAN13, UPC_A, UPC_E, Code93, GS1-128, GS1-DataBar extended, ITF, PHARMACODE, CODABAR |             |            |            |
| QR code          | QR Code, DataMatrix, PDF417   |             |            |            |
| Communication    | UDP, TCP, Serial, Http, Modbus, FTP, Profinet, Ethernet/IP  |             |            |            |
| Networkinterface | 100 Mbit  |             |            |            |

| Part number      | PID-B2010G-06H   | PID-B2023G-06H                | PID-B2010G-06                 |
|------------------|--|-------------------------------|-------------------------------|
| Pixels           | 1 million  | 2.3 million                   | 1 million                     |
| Resolution       | 1280*800   | 1920*1200                     | 1280*800                      |
| Frame rate       | 50fps  | 40fps                         | 50fps                         |
| Lens focal       | 6mm  | 6mm                           | 6mm                           |
| Light source     | red/white/blue light optional  | red/white/blue light optional | red/white/blue light optional |
| Focus adjustment | Manual adjustment  | Manual adjustment             | Fixed                         |
| Bar code         | Code39, Code128, EAN8, EAN13, UPC_A, UPC_E, Code93, GS1-128, GS1-DataBarextended, ITF, PHARMACODE, CODABAR |                               |                               |
| QR code          | QR Code, DataMatrix, PDF417  |                               |                               |
| Communication    | UDP, TCP, Serial, Http, Modbus, FTP, Profinet, Ethernet/IP   |                               |                               |
| Networkinterface | 100 Mbit   |                               |                               |

| Part number      | PID-P3013G   | PID-P3016G  | PID-P3050G | PID-P3060G |
|------------------|--|-------------|------------|------------|
| Pixels           | 1.3 million  | 1.6 million | 5 million  | 6 million  |
| Resolution       | 1280*1024  | 1440*1080   | 2368*1792  | 3072*2048  |
| Frame rate       | 60fps  | 60fps       | 45fps      | 40fps      |
| Lens focal       | 6/8/12/16/25 mm optional   |             |            |            |
| Light source     | Red light, semi-polarized  |             |            |            |
| Focus adjustment | Auto-focus   |             |            |            |
| Bar code         | Code39, Code128, EAN8, EAN13, UPC_A, UPC_E, Code93, GS1-128, GS1-DataBarextended, ITF, PHARMACODE, CODABAR |             |            |            |
| QR code          | QR Code, DataMatrix, PDF417  |             |            |            |
| Communication    | UDP, TCP, Serial, Http, Modbus, FTP, Profinet, Ethernet/IP   |             |            |            |
| Networkinterface | Gigabit  |             |            |            |

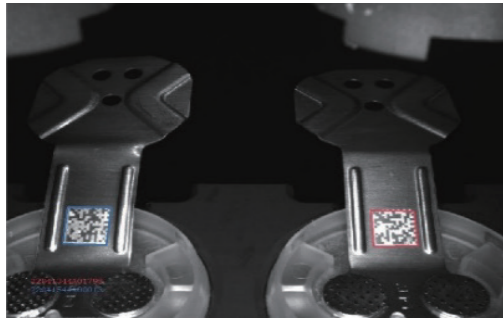
| Part number      | PID-P2013G-05  | PID-P2013G-05H           |
|------------------|--|--------------------------|
| Pixels           | 1.3 million  | 1.3 million              |
| Resolution       | 1280 × 1024  | 1280 × 1024              |
| Frame rate       | 50fps  | 50fps                    |
| Lens focal       | 5mm  | 5mm                      |
| Light source     | Red/white light optional   | Red/white light optional |
| Focus adjustment | Fixed  | Manual adjustment        |
| Bar code         | Code39, Code128, EAN8, EAN13, UPC_A, UPC_E, Code93, GS1-128, GS1-DataBarextended, ITF, PHARMACODE, CODABAR |                          |
| QR code          | QR Code, DataMatrix, PDF417  |                          |
| Communication    | UDP, TCP, Serial, Http, Modbus, FTP, Profinet, Ethernet/IP   |                          |
| Networkinterface | 100 Mbit   |                          |

# Application

**Typical industry:** new energy lithium battery, photovoltaic, automobile, semiconductor, home appliances

**Typical scene:** 3C components (e.g., mobile phone glass code, midframe code, fixture code), lithium battery components (e.g., top cover of the battery cell, winding adhesive film spray code), photovoltaic panel parts (e.g., pre-laminate label code, post-heat press label code, post-laminate label code) code reading.

Cylindrical battery cover laser-engraved code



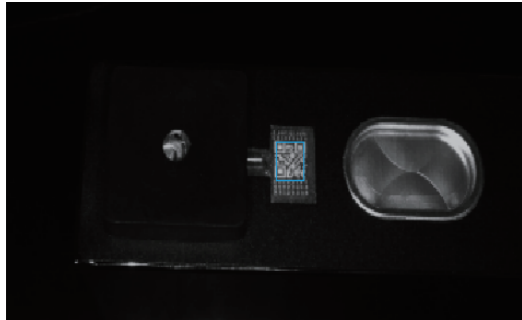
winding adhesive film spray code



Mobile glass laser-etched code



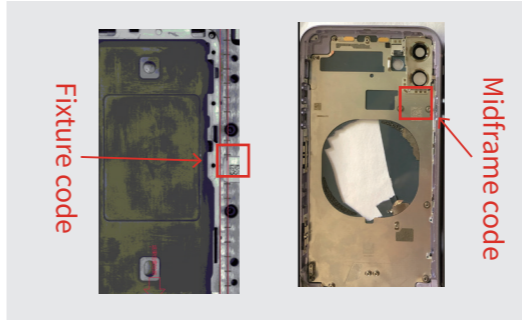
Battery cover laser-engraved code



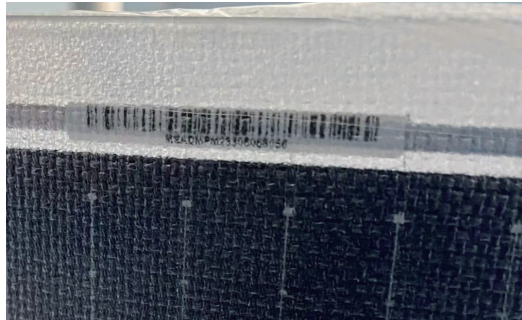
Photovoltaic panel post-laminate label code



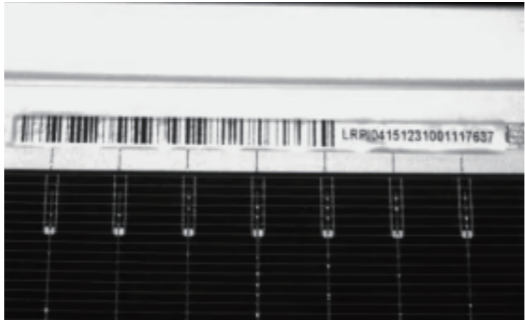
Mobile midframe fixture and code



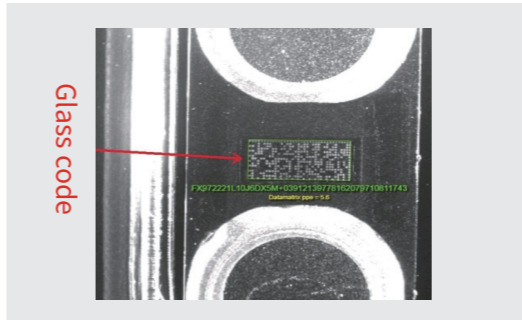
Photovoltaic panel pre-laminate label code



Photovoltaic panel post-heat press label code



Mobile midframe fixture and code



# SERVICE AND SUPPORT



## Excellent service

- One-to-one service, first time response.
- Personalized selection service, ultimate VIP experience.

We are looking forward to your call!

**0086-21-57486188-8806**

## Remarkable quality

- Comprehensive quality control from raw material supply to service.
  - Product quality verification of 8 major laboratories.
  - Safe production, precise management, and high-quality performance.
  - Dynamic system, excellent service, and comprehensive quality control.

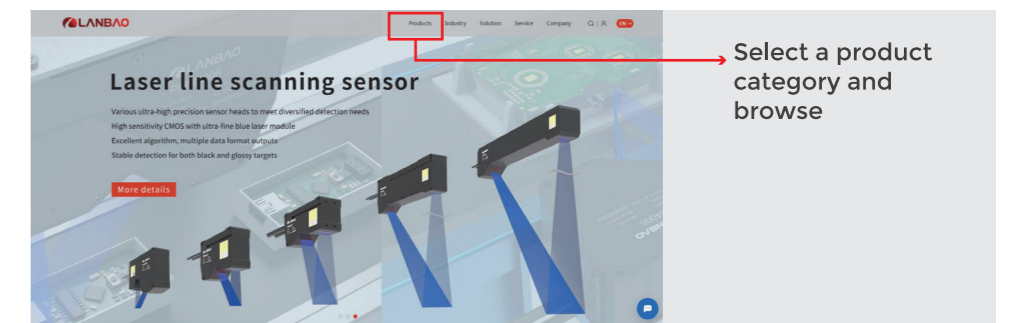


## Personalized selection service

- Website+Catalog for selection, Lanbao professional team offers more efficient online selection services, providing professional customized solutions for different situations.

Lanbao websites:

[www.lanbaosensor.com](http://www.lanbaosensor.com) / [www.cnlanbaosensor.com](http://www.cnlanbaosensor.com)



## Full life cycle service

- Lanbao's technical team provides customers with complete services from product selection/personalized customization, sales, system integration, training, operation, maintenance, after-sales and upgrade.

## Customized solutions

- Lanbao provides customers with efficient customized services and quality assurance.
  - Standard orders and regular stock products can be shipped immediately.



## Quality system with efficiency management

- The reliable and stable manufacturing management system makes Lanbao intelligent production come true. Each product of Lanbao not only strictly implements feasibility and reliability review in the design stage but also has strict control by quality statistical management in the production process. In this way, product's great performance and ability to withstand harsh environment can be ensured. With the ultimate spirit of ingenuity, Lanbao guarantees the best quality of products to satisfy customer's needs.

**Approved**

**Approved**