

Plastic square photoelectric sensor **PSE-SC** series



Feature description

- Long-shape light spot design, can stably detect various hole of PCB
- Highlight 360° indicator, easy to identify working conditions
- One-click setting NO/NC, simple and fast
- Small difference between black and white, suitable for detecting target in various colors



Model specification

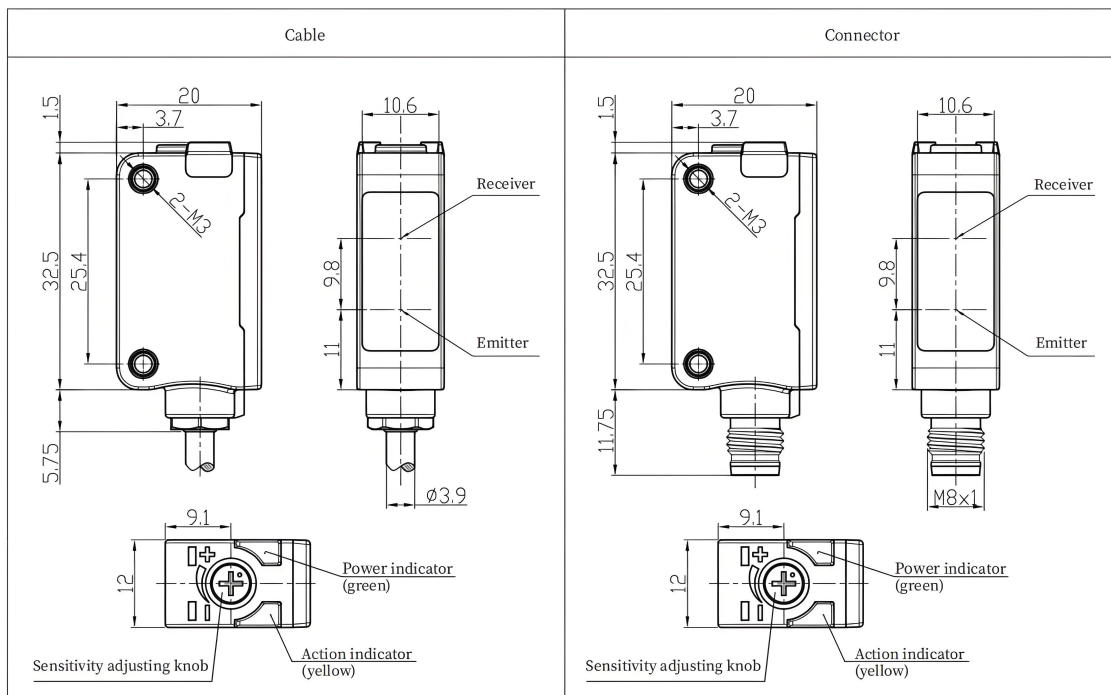
NPN NO/NC cable	PSE-SC10DNBX	PNP NO/NC cable	PSE-SC10DPBX
NPN NO/NC connector	PSE-SC10DNBX-E3	NPN NO/NC connector	PSE-SC10DPBX-E3

Specifications

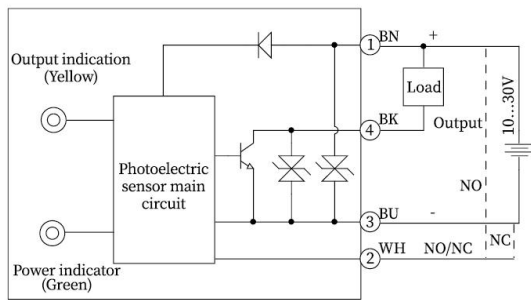
Detection distance	0.3-10cm	Protection circuit	Short circuit protection, Polarity protection,
Dead zone	≤3mm ^①		Overload protection
Standard target	100*100mm white cards	Anti-ambient light	Sunlight≤10,000Lux;Incandescent light≤3,000Lux
Light spot size	7*70mm@100mm	Operating temperature	- 25...55 °C(No condensation, No icing)
Color sensitivity	≥90%	Storage temperature	- 30...70 °C
Return difference	< 5% ^①	Protection degree	IP67
Supply voltage	10...30VDC(Ripple P-P: < 10%)	Certification	CE
Consumption current	< 20mA	Shell material	PC+ABS
Load current	100mA	Lens	PMMA
Voltage drop	≤1V(Voltage drop<10mA),<2V(Voltage drop<100mA)	Weight	50g/10g
Light source	Red light(640nm)	Connection type	2m PVC Cable/M8-4pin connector
Response time	T-on : ≤1ms ; T-off : ≤1ms	Accessory	Mounting Bracket ZJP-8, Screws×2
Indicator	Green:Power indication;Yellow:output indication		Operation manual

①Use 100*100mm 90% reflectivity white card;Room temperature 25°C.

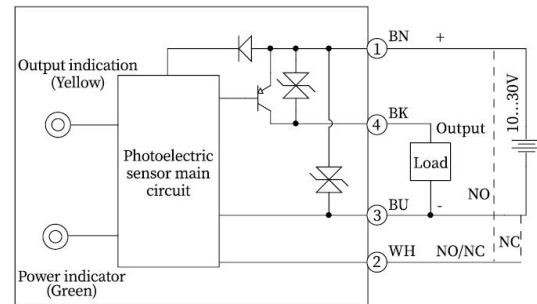
Dimensions



Wiring diagram



NPN



PNP